

> Our technology. Your success.
Pumps ■ Valves ■ Service



When in the line of fire,
trust the expert





More power to fight fire

KSB Pumps Limited manufactures a wide range of world-class energy efficient pumps and valves from its six facilities in India, each dedicated to a product line.

An ISO 9001 & ISO 14001 organisation, KSB in India has systematised concurrent production of dissimilar components. All components, each with different specifications, flow through the computer-controlled manufacturing process.

A systematised solution by KSB involves more than merely designing and building the right pump and valve to meet the exacting demands of a variety of customers.

KSB pumps and valves are made available through a very wide distribution network comprising 4 zonal offices, 15 branch offices, over 800 authorised dealers, 4 service stations, 150 authorised service centres and 22 godowns... All this to ensure, that for every KSB pump and valve in use, there is a KSB sales and service outlet around the corner.

KSB not only engineers state-of-the-art pump and valve technology but also provides service to rely on. KSB stands by its customers all along, through the entire implementation of a project, offering continuous after-sales service and undertakes a variety of service contracts and energy audits to provide optimum and cost effective solutions.

At KSB, the relation with the customer is an ongoing partnership, continuing beyond product commissioning. Regular customised training sessions are held, in-house and at the customers' sites, to acquaint them with selection, operation and maintenance to get the best from KSB pumps and valves.

This is made possible by the commitment and dedication of the collective strength of a 2000 strong team who firmly believe that rewards come through the success of a client's project.



Why give fire an upper hand?

Fire has the habit of arriving unannounced and thus creating panic of all kinds. There's the fear of losing lives, valuables, property, and even reputation. And so, the last thing one can afford when fire strikes is delay; delay in responding to the situation at hand and the emergent situation. When it comes to fire, India is like a tinderbox and for good many reasons.

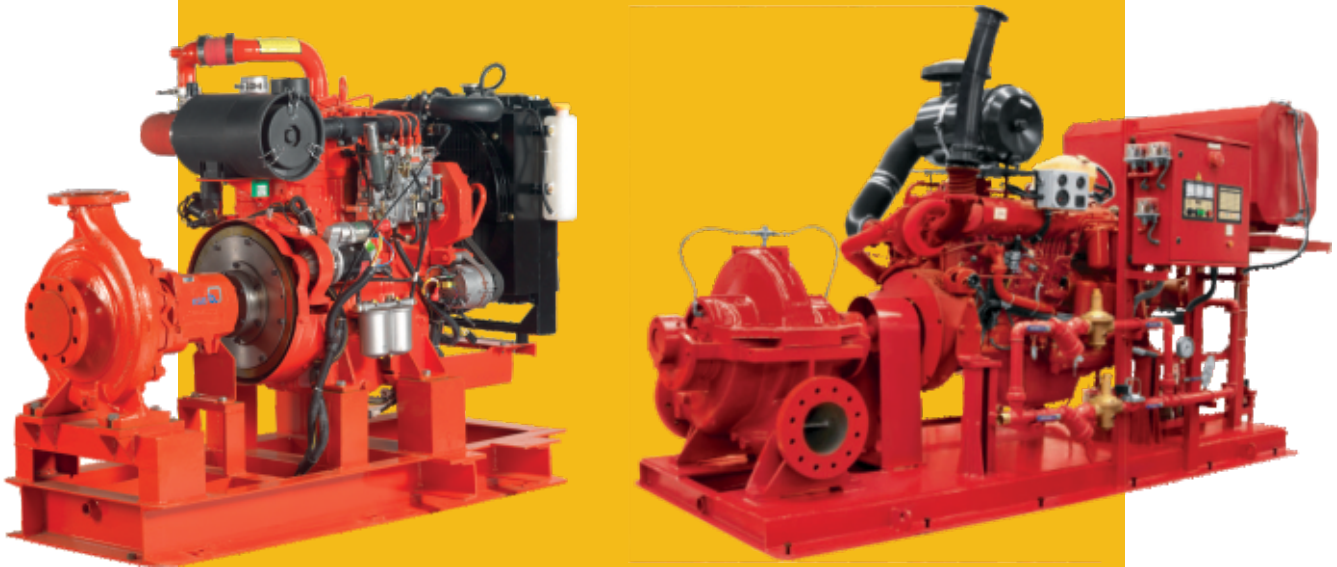
- Dry climatic conditions
- Hugely populated and congested
- Scant regard for prevention measures
- Little or no provision for firefighting
- Poor awareness in handling the situation
- Uninsured property and lives

This makes it absolutely imperative to have a robust fire prevention and fighting system installed and maintained operative for any eventuality.

Around the world and particularly in India, KSB is the most trusted and reliable name in production of pumps for all purposes.

Product Range

Complete pump sets with diesel engine



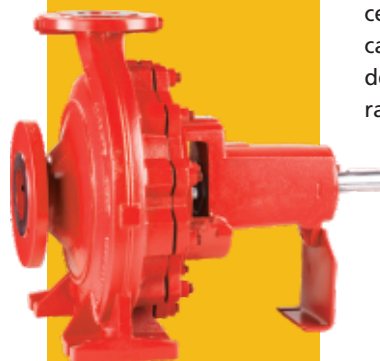
We manufacture and supply complete pump sets made as per local regulations and customer specifications.

Complete packages can be supplied (electric motor, diesel engine and jockey pump on one baseplate, with control cabinets, tank, batteries, etc.). This also includes the complete piping with discharge collector, valves and pressure switch.

All pump sets can be equipped with any type of fire-fighting pump and driven by either electric motor or diesel engine. The scope of supply also includes a control cabinet, batteries and a fuel tank. Commissioning, service and maintenance can be carried out by our qualified Service staff as an option.

Etanorm G

Pump Size	25 to 150 mm
Capacity	up to 660 m ³ /hr.
Head	up to 160 m
Discharge press.	up to 16 bar
Temperature	-30 to 140°C
Speed	up to 2900 rpm

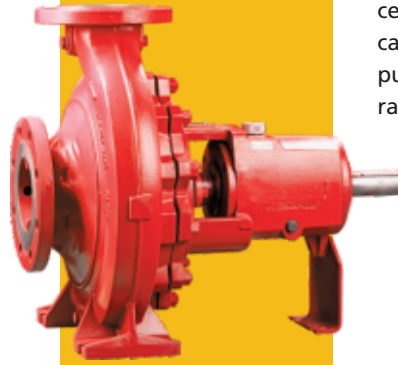


Construction

Horizontal, end suction, centrifugal, radially split volute casing pumps in back-pull-out design fitted with single stage radial impeller.

MegaCPK

Pump Size	25 to 150 mm
Capacity	up to 1160 m ³ /hr.
Head	up to 162 m
Discharge press.	up to 25 bar
Temperature	-30 to 300°C
Speed	up to 2900 rpm

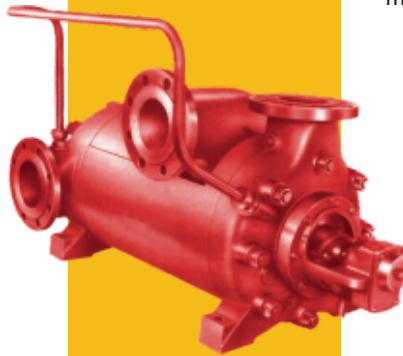


Construction

Horizontal, end suction, centrifugal, radially split, volute casing process pump in back-pull-out design, fitted with a radial impeller.

WKS

Pump Size	40 to 150 mm
Capacity	630 m ³ /hr.
Head	400 m
Discharge press.	up to 16 bar
Temperature	-30 to 140°C
Speed	up to 2900 rpm



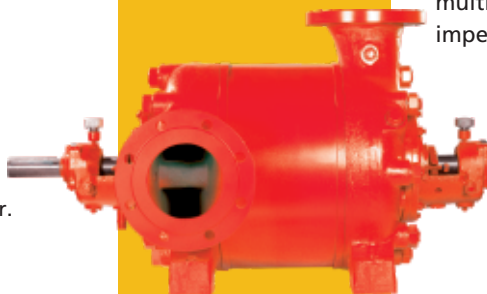
Construction

Horizontal, radially split high pressure, multistage pumps with multi outlet construction.

Contact KSB for more details.

WK, WL, WKS, WKFI

Pump Size	40 to 150 mm
Capacity	up to 630 m ³ /hr.
Head	up to 780 m
Discharge press.	up to 63 bar
Temperature	up to 230°C
Speed	up to 4500 rpm



Construction

Horizontal, radially split, ring section, high pressure multi-stage pumps with radial impellers.

Etabloc

Pump Size	25 to 150 mm
Capacity	up to 640 m ³ /hr.
Head	up to 160 m
Discharge press.	up to 16 bar
Temperature	-30 to 140°C
Speed	up to 2900 rpm

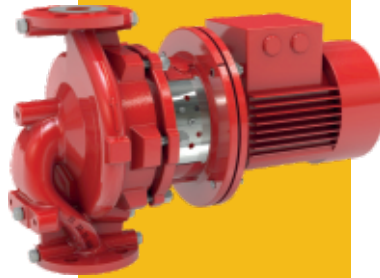


Construction

Compact, horizontal, end suction, centrifugal, radially split volute casing pumps in monobloc construction.

Etaline

Pump Size	22 nos.
Capacity	350 m ³ /hr.
Head	up to 160 m
Discharge press.	up to 22 Kw
Temperature	-30 to 140°C
Speed	2900 rpm



Construction

Single stage inline volute casing pumps with back pull out design and ratings to EN 733 with radically split volute casing replaceable wear rings, stub shaft design. Closed radial impeller, single mechanical seal to EN 12756 and a shaft equipped with replaceable shaft sleeve in seal area.

Also available in vertical execution.

Movitec B

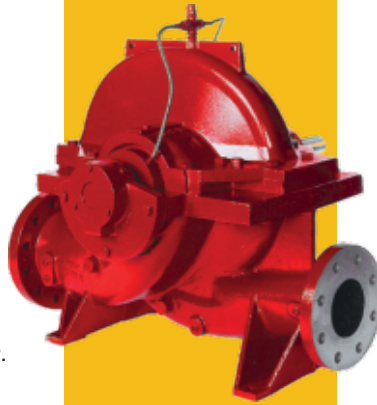
Pump Size	2, 4, 6, 8, 10, 15, 25, 40, 60, 90
Capacity	up to 112.8 m ³ /hr.
Head	up to 225 m
Discharge press.	up to 40 bar
Temperature	-20 to 140°C
Speed	up to 3600 rpm



Construction

Multi-stage, vertical inline high-pressure centrifugal pumps in ring-section design.

Omega/RDL



Capacity up to 12000 m³/hr.
Head up to 214 m

Construction

Horizontal split case pump with radial flow impeller

Also available with Fm/UL from our imported range. Contact KSB for more details

Design data for the individual series on request

Submersible Motor Pumps



Pump Size min. 75 mm
Capacity up to 900 m³/hr.
Head up to 360 m
Motor rating up to 110 Kw
Temperature Ambient
Speed 2900 rpm

Construction

Submersible pump in multi-stage construction with radial or mixed flow impellers coupled with oil or water filled, single/three phase submersible motors. Pumps with SS jacket are also available up to 100 mm diameter.

CPK



Pump Size 32 to 250 mm
Capacity up to 1200 m³/hr.
Head up to 150 m
Discharge press. up to 25 bar
Temperature -70 to 350°C
Speed up to 2900 rpm

Construction

Horizontal, end suction, centrifugal, radially split, volute casing process pumps in back-pull-out design, fitted with a radial impeller.

BEV



Construction

Deep-well turbine pumps from our imported range

Capacity

up to 800 m³/hr.

Head

up to 350 m

Contact KSB for more details.



Main electric fire pump selection

Sr.No.	Flow	Head	Pump Type	Pump Model	Suction x Delivery	Speed	Motor
	m ³ /hr	mtr			mm	RPM	kW
1	96	56	End Suction	ETN 100-080-200 GI4	100x80	2900	30
2	97	70	End Suction	ETN 100-80-250 GI4	100x80	2900	37
3	137	70	End Suction	ETN 100-80-250 GI4	100x80	2900	45
4	137	88	End Suction	ETN 100-80-250 GB5	100x80	2900	55
5	137	105	End Suction	ETN 100-80-315 GB5	100x80	2900	75
6	171	70	End Suction	ETN 125-100-250 GI4	125x100	2900	55
7	171	88	End Suction	ETN 100-80-250 GB5	100x80	2900	75
8	171	105	End Suction	ETN 100-80-315 GB5	100x80	2900	90
9	273	70	End Suction	MCPK 250-200-500 GB4	250x200	1450	90
10	273	88	End Suction	ETN 125-100-250 GC2	125x100	2900	110
11	273	105	End Suction	ETN 125-100-315 GB5	125x100	2900	110
12	410	70	End Suction	MCPK 250-200-500 GB4	250x200	1450	125
13	410	88	End Suction	MCPK 250-200-500 GB4	250x200	1450	160
14	616	70	End Suction	CPK 250-500 GB8	300x250	1450	200
15	616	88	End Suction	CPK 250-500 GB8	300x250	1450	250

Jockey pump selection

Sr.No.	Flow	Head	Pump Type	Pump Model	Speed	Motor
	m ³ /hr	mtr			RPM	kW
1	10.8	56	Vertical Inline	Movitec VCF 10B08	2900	3
2	10.8	70	Vertical Inline	Movitec VCF 10B09	2900	4
3	10.8	88	Vertical Inline	Movitec VCF 10B13	2900	5.5
4	10.8	105	Vertical Inline	Movitec VCF 10B15	2900	5.5
5	10.8	56	End Suction	ETN 050-032-250.1 GI4	2900	6
6	10.8	70	End Suction	ETN 050-032-250.1 GI4	2900	7.5
7	10.8	88	End Suction	ETN 050-032-250 GI4	2900	11
8	27	35	End Suction	ETB 050-032-200 GI4	2900	7.5
9	54	35	End Suction	ETB 065-040-160 GI4	2900	11

Main diesel engine fire pump selection

Sr. No.	Flow m ³ /hr	Head mtr	Pump Type	Pump Model	Suction X Delivery		Speed RPM	KOEL Engine				Greaves Engine			
					mm	mm		Model	No. of Cylinders	Battery Voltage (V)	Engine BHP	Model	No. of Cylinders	Battery Voltage (V)	
															Engine BHP
1	96	56	End Suction	ETN 100-80-315 GB5	100x80	100x80	1800	3R1040	3	12V	42	3G11NA	3	12V	
2	97	70	End Suction	ETN 100-80-400 GI4	100x80	100x80	1800	4R1040	4	12V	62	3G11T	3	12V	
3	137	70	End Suction	ETN 100-80-400 GI4	100x80	100x80	1800	4R1040	4	12V	62	3G11T	3	12V	
4	137	88	End Suction	ETN 150-125-400 GI4	150x125	150x125	1800	4R1040T	4	12V	94	4G11T	4	12V	
5	137	105	End Suction	MCPK 200-150-500 GB4	200x150	200x150	1800	6R1080T	6	24V	132	4G11TA	4	12V	
6	171	70	End Suction	ETN 125-100-400 GI4	125x100	125x100	1800	4R1040T	4	12V	94	4G11T	4	12V	
7	171	88	End Suction	ETN 150-125-400 GI4	150x125	150x125	1800	4R1040TA	4	12V	102	4G11T	4	12V	
8	171	105	Multistage	WK 150/3 EXE 1	200x150	200x150	1800	4R1040T	4	12V	94	4G11T	4	12V	
9	273	70	End Suction	ETN 150-125-400 GI4	150x125	150x125	1800	4R1040TA	4	12V	132	4G11TA	4	12V	
10	273	88	End Suction	ETN 150-125-400 GI4	150x125	150x125	1800	6R1080T	6	24V	167	4G11TA	4	12V	
11	273	105	End Suction	MCPK 200-150-500 GB4	200x150	200x150	1800	6SL9088TA	6	24V	198	6G11TA	6	24V	
12	410	70	End Suction	ETN 200-150-400 GI	200x150	200x150	1800	6R1080TA	6	24V	167	4G11TA	4	12V	
13	410	88	End Suction	ETN 200-150-400 GB5	200x150	200x150	1800	6SL9088TA	6	24V	198	6G11TA	6	24V	
14	410	105	End Suction	MCPK 250-200-500 GB4	250x200	250x200	1800	6SL8800TA	6	24V	254	6G11TA	6	24V	
15	616	70	End Suction	CPK 250-500 GB8	300x250	300x250	1800	6SL9088TA	6	24V	230	6G11TA	6	24V	
16	616	88	End Suction	CPK 250-500 GB8	300x250	300x250	1800	6SL8800TA	6	24V	313	TBD3V6MKII	6	24V	



www.ksbindia.co.in

Manufacturing Plants :

Head Office & Pimpri :
Irrigation & Process Division
Mumbai-Pune Road, Pimpri,
Pune - 411 018.
Tel.: 020-2710 1000 Fax : 020-2742 6000

Chinchwad :
Power Projects Division
D-II Block, MIDC Chinchwad,
Pune - 411 019.
Tel.: 020-2740 9100 Fax : 020-2747 0890

Coimbatore :
Valves Division
151, Mettupalayam Road,
NSN Palayam Post,
Coimbatore - 641 031.
Tel.: 0422-2468222, 2468547-9
Fax : 0422-2468232

Khandala :
Energy Pumps Division
A1, MIDC Khandala Phase - II,
Village Kesurdi, Satara - 412 802.
Tel.: 02169-246800

Sinnar :
Standard Pumps Division
Plot No. E-3 & E-4, MIDC Sinnar,
Nashik - 422 113.
Tel.: 02551-230252 / 53, 229700
Fax : 02551-230254

Vambori :
Foundry Division
Vambori, Ahmednagar - 413 704.
Tel.: 02426-272534, 272550, 272463
Fax : 02426-272043

Regd. Office :
126, Maker Chambers III, Nariman Point,
Mumbai - 400 021.
Tel.: 022-6658 8787 Fax : 022-6658 8788

Zonal Offices :
East :
30, Circus Avenue, 2nd Floor,
Kolkata - 700 017.
Tel.: 033-2287 0473, 2290 0117
Fax : 033-2287 0588

West :
126, Maker Chambers III, Nariman Point,
Mumbai - 400 021.
Tel.: 022-6658 8787 Fax : 022-6658 8788

North :
KSB House, A-96, Sector IV, NOIDA,
Dist. Gautam Budh Nagar - 201 301.
Tel.: 0120-254 1091
Fax : 0120-255 0567

South :
Guindy House, II Floor, # 92 Anna Salai,
Chennai - 600 032.
Tel.: 044-2235 2571-2, 2235 5673
Fax : 044-2235 2749

Service Stations :

Chennai :
No. 4, (Old No. 18), Chakrapani Road,
Guindy, Chennai - 600 032.
Tel.: 044-2255 0704

Raipur :
Ring Road - 2, Behind Jeet Cold Storage,
Gondwara Road, Raipur - 493 221.
Tel.: 0771-650 1375

NOIDA :
KSB House, A-96, Sector IV, NOIDA,
Dist. Gautam Budh Nagar - 201 301.
Tel.: 0120-254 1091
Fax : 0120-255 0567

Odhav :
Shed No. 22, Gujarat Vepari
Mahamandal, Odhav,
Ahmedabad - 382 410.
Tel.: 079-2290 0372
Fax : 079-2290 0749

Branch Offices :

Ahmedabad :
Shed No. 22, Gujarat Vepari
Mahamandal, Odhav,
Ahmedabad - 382 410.
Tel.: 079-2290 0707, 2290 0717

Aurangabad :
Plot No. P-204, Shivshankar Colony,
Near Hotel Sayli,
Aurangabad - 431 005.
Tel.: 0240-235 1440, 234 2447
Fax : 0240-235 1440

Bangalore :
191, 1st Floor, West Of Chord Road,
II Stage, Bangalore - 560 086.
Tel.: 080-2349 1806, 2349 3925
Fax : 080-2349 6036

Baroda :
4-B, Ramkrishna Chamber,
Productivity Road, Baroda - 390 005.
Tel.: 0265-233 0532, 233 3226
Fax : 0265-235 0002

Bhubaneswar :
N5/39, 1st Floor, IRC Village, Nayapalli,
Bhubaneswar - 751 015.
Tel.: 0674-255 8497
Fax : 0674-255 8499

Chandigarh :
SCO - 189, 2nd Floor, Sector - 7C,
Chandigarh - 160 019.
Tel. / Fax : 0172-279 0072, 279 0062

Indore :
B-14, Ratlam Kothi, Kanchan Baug
Road, Indore - 452 001.
Tel.: 0731-252 9478, 252 9704
Fax : 0731-252 9704

Jaipur :
Anjali Chambers, 2nd Floor, Block C,
10, Rajbhawan Road, Civil Lines,
Jaipur - 302 001.
Tel.: 0141-222 4554, 222 4904
Fax : 0141-222 4904

Jamshedpur :
B-1/5, 1st Floor, Gangotri House,
'Q' Road, 1, Sura Bhawan Area,
Bistupur, Jamshedpur - 831 001.
Tel.: 0657-231 7129
Fax : 0657-231 7128

Lucknow :
309, Chintels House, 16, Station Road,
Lucknow - 226 001.
Tel.: 0522-263 5203, 263 5597
Fax : 0522-263 5597

Mumbai :
126, Maker Chambers III, Nariman Point,
Mumbai - 400 021.
Tel.: 022-6658 8787
Fax : 022-6658 8788

Nagpur :
203, Suryakiran Complex, Bajaj Nagar,
Nagpur - 440 010.
Tel.: 0712-223 6889, 222 9148
Fax : 0712-222 9148

Pune :
Aamod Apartments, 'B' Wing,
Block No. 33, Behind Hotel Shraavan,
Opp. Police Ground
Off Fergusson College Road,
Pune - 411 016.
Tel.: 020-2565 0393 / 0394 / 0396 / 0398

Raipur :
D-62, Sector - 2, Devendra Nagar,
P.O. Pandri, Raipur - 492 001.
(Chhattisgarh).
Tel.: 0771-258 3658, 258 3921
Fax : 0771-258 3921

Secunderabad :
D. No. 12-13-197, 198,
Flat No. 103 & 104, 1st Floor,
Pavani Anusuya Towers, Tarnaka,
Secunderabad - 500 017.
Tel.: 040-2700 1724, 2700 3696
Fax : 040-2700 1725



KSB Pumps Limited
Mumbai-Pune Road, Pimpri, Pune 411 018.
Tel.: +9120 2710 1000 Fax : +91 20 2742 6000 www.ksbindia.co.in