

Water Pressure Boosting Pump System - *moviBOOST*



Water Pressure Boosting Pump Systems *moviBOOST*



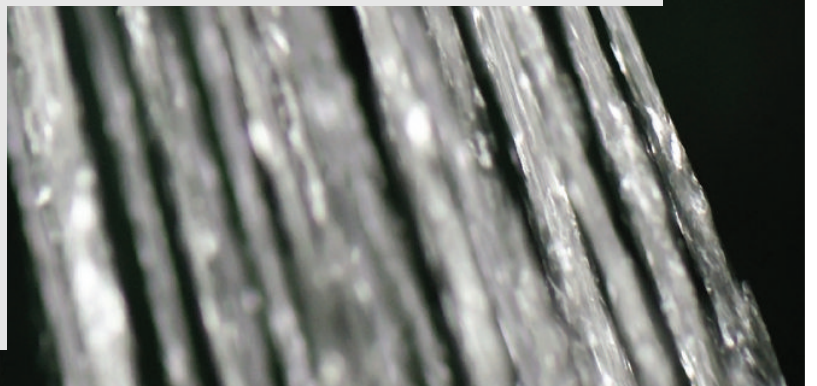
moviBOOST K

Automatic pressure monitoring system with On/Off control



moviBOOST V

Continuous speed monitoring automatic system with one flying VFD



moviBOOST VP

Continuous speed monitoring automatic system with VFD for each pump



Design

Fully automatic pressure boosting units available in three variants - K, V & VP with 2 to 6 vertical high-pressure pumps and fully electronic control of the required supply pressure with two standard volt-free contacts for fault indication.

Applications

- Residential Buildings
- Hospitals
- Office Buildings
- Hotels
- Departmental Stores and other applications

Fluid handled

Drinking water, service water, fire-fighting water, cooling water, where there is no chemical and mechanical corrosive action on the system materials.

Operating Data (Standard Design)

Capacity Q	: Up to 660 m ³ /hr.
Head H	: Up to 160 m
Temperature	: UP to 70 °C
System discharge pressure	: 10 & 16 bar
Inlet pressure	: Up to 10 bar
Supply voltage	: 3 Phase, 415 Volts, 50 Hz
Drive	: 2 Pole electric motor

Materials

Pump

Suction/Discharge casing	: C.I./Stainless Steel
Hydraulic System	: Stainless Steel
Mechanical Seal	: EN 12756
Spring loaded ring	: Silicon Carbide
Seat Ring	: Hard Carbon
Elastomer	: EPDM

Hydraulic parts

Distributor pipe	: MS CED (Cataphoresis) or Galvanised
------------------	---------------------------------------

Valves

Ball Valve	: Brass
Butterfly valve	: MS/CI
Non return Valve	: MS/CI

Control cabinet equipment (Standard)

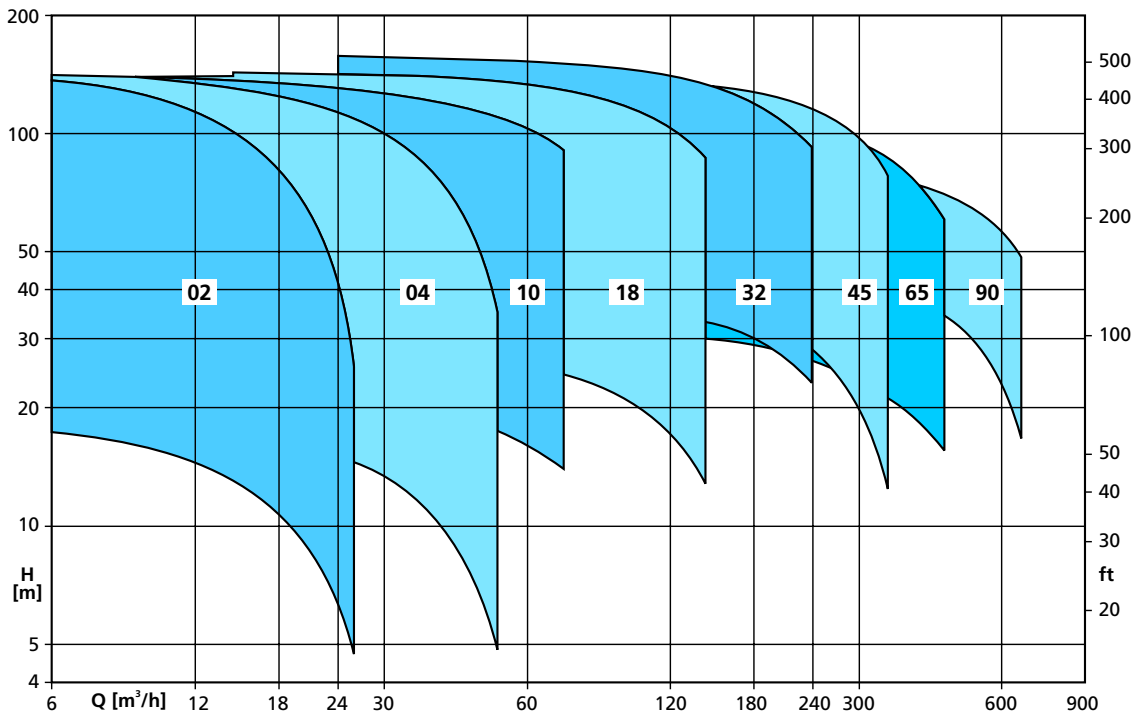
- Pump control and monitoring equipment
- Digital display with operating panel
- LEDs indicating operational availability and system faults
- Service interface for connection to a PC
- Frequency inverter
- Control transformer
- Motor protection per pump
- Master switch, lockable
- Terminals with identification for all connections
- Circuit diagram and part list for electrical parts
- Terminals for connecting analog or digital dry running protection equipment
- Remote On/Off terminals

Standard system equipments

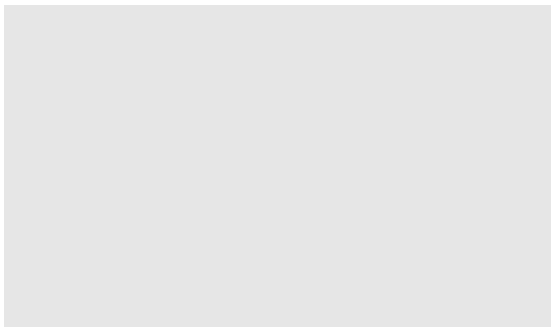
- 2-6 Vertical high pressure pumps (std. pumps)
- Hydraulic components made of Stainless Steel
- 1 check valve and 2 shut off Valves for each pump
- Pressure transmitter on the discharge pressure side
- Pressure indication via analog pressure gauge
- Steel base plate CED (Cataphoresis) / Galvanised
- Pumps are fixed on the base plate on anti vibration mountings



Performance Chart



Your nearest contact :



KSB PUMPS LIMITED
 Mumbai-Pune Road, Pimpri, Pune 411 018. India
 Tel. : +91 20 2710 1000 Fax : +91 20 7242 6000
 www.ksbindia.co.in

1773.021 - 85 Technical matter. Subject to change without notice.